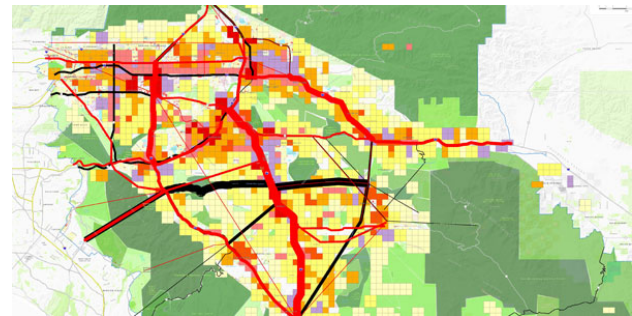




Location: Inland Empire

Timeframe: 2005-2006

Project Partners: Western Riverside Council of Governments (WRCOG), San Bernardino Association of Governments (SANBAG), Urban Land Institute (ULI)



Project Services

- Public involvement
- Public workshops
- Scenario building

This Demonstration Project conducted a visioning workshop for stakeholders in the Inland Empire to express a shared vision of future growth in the region and focusing on land-use and different development types.

Goals

- Understand resident's vision for future land-use in the region using the Compass Blueprint 2% strategy
- Involve ULI participants in the process
- Use current housing trends to forecast future choices
- Form a region-wide growth management framework

The Inland Empire is the fastest-growing area in the Southern California region. The Western Riverside Council of Governments, the Urban Land Institute and Compass Blueprint teamed up to facilitate a visioning process to serve as the foundation of future plans and programs. Participants of the workshop were engaged in scenario modeling where they could design and plan the location of new development on a physical map of the region. Compass Blueprint then compiled the results of the workshop using mapping software to serve as the basis for analysis.

Results

- Participants opted for an interconnected regional transit system, connecting the Inland Empire with other regional destinations such as Los Angeles
- Higher density, new employment, and new development were given preference over current projects